

# “Craig’s Custom Mustang Brackets”

VA Business License #117073-0000-5961

**(2005-2008 Mustang, V-6, GT, GT/CS, Roush, Saleen S281, Shelby GT, Steeda)**

You have just purchased a custom License Plate Bracket hand fabricated by Craig Broussard. Please read this document in its entirety prior to installing your license plate and new bracket.



## Installation

### **STEP #1 – Mount the License Plate to the bracket:**

\* Align the license plate with the two top holes on the bracket and attach it by using the supplied hardware.

\* Nylon locking nuts are supplied but may be supplemented with cap nuts or your favorite mounting hardware.



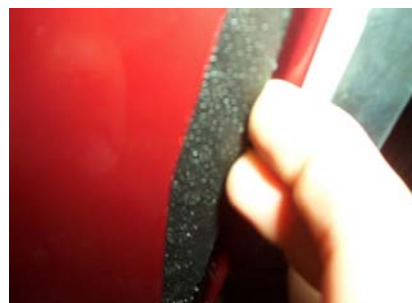
### **STEP #2 - Mount bracket to front bumper:**

\* Remove the two wing nuts, lock washers and compression plate.

\* Under the bumper front fascia and just forward of the metal bumper is a Styrofoam/plastic insert. Gently pull the insert forward, approx 1/4" away from the metal bumper by squeezing your fingers between the bumper and Styrofoam/plastic insert. You will see a 1" flat metal lip extending down from the main structure of the square metal tubular bumper.

\* Slide the rubberized portion of the bracket up between the bumper insert and bumper lip until the rubber cushions on the bracket contact the bottom of the fascia.

\* Center the bracket and license plate on the front bumper by moving the bracket side to side.



\* Install the compression plate

\* Peel off the red portion of 3M tape exposing adhesive strip. Align the compression plate securing bolts, from the main bracket, through the compression plate holes. (A minor adjustment of the bracket, up or down, may be required to align the holes properly and to ensure that the 3M tape is making full contact with the bumper lip. The 3M tape should face towards the bumper lip. Taking care not to let 3M tape touch bumper lip, aligned the holes. Once the holes are properly aligned, fully seat the compression plate against the lip of the bumper, allowing the compression plate mounting studs to pass through the compression plate and the 3M tape to adhere to the bumper lip.

\* Install the lock washers and wing nuts. Tighten the compression plate wing nuts to secure the bracket to the bumper.

\* The picture to the right is a correctly installed bracket. If you have followed the directions above, the license plate should be centered on the front bumper, and secured as shown.

**TIP:** The install/removal process is much easier if you use the included wing nuts and lock washers. Nylon locking nuts provide better security and may not require periodic inspection.



**NOTE:** (Use of the 3M tape, as an added means of securing the bracket, is optional but highly recommended.)

**NOTE:** The compression plate mounting studs should not be removed or adjusted.



## Removal

\* To remove your license plate bracket, simply remove the wing nuts and lock washers. Push the compression plate bottom edge up and away from the bracket bolts. (This may require a little force to partially release the 3M tape). The compression plate will remain attached to the bumper lip unless you completely remove it. I recommended that you leave the compression plate attached. It makes for quick install and removal and will prevent the 3M tape from being over used.

- Taking care not to scratch the vehicle, gently slide the bracket out from between the bumper lip and bumper Styrofoam insert.

**NOTE:** After multiple install/removals, the 3M double sided adhesive tape may need to be replaced.

## Bracket Care and Maintenance

- The powder coated style bracket requires very little or no maintenance, just a wipe down. The hand polished bracket may require a periodic coat of aluminum/metal polish to remove any water spots or finger prints. If you notice any corrosion, the bracket can be sanded using 1000 grit paper and re-polished.

- Check the bracket periodically for tightness.

### **“Craig’s Custom Mustang Brackets”**

600 Rock Spring Court, Virginia Beach, VA 23462

Office: (757) 313-8480

Cell: (757) 636-2445

[www.ccmustangbrackets.com](http://www.ccmustangbrackets.com)

**Disclaimer:** Craig's Custom Mustang Brackets is not responsible for any damage or loss incurred during the installation and use of this license plate bracket. The purchaser assumes full responsibility for the placement and attachment of the license plate bracket. The hand polished version of this bracket may experience minor corrosion if exposed to the outdoor elements for extended periods of time. This license plate bracket has been exposed to temperatures between 30F - 95F, and speeds up to 140mph for a short period of time. If you do not hand wash your Mustang, remove the bracket prior to entering any automatic rotating brush style car washes.